

City of Fremont Update

Date: June 26, 2020

To: City Employees/ City Boards/ Mayor & City Council

City Reopening Efforts Continue

City Parks: Splash pads and playgrounds remain open, but are not sanitized, use is at one's own risk.

Ronin Pool: Ronin will be open for open swimming starting July 2; registrations will be required. Details will be released on July 1. Registration for Session 2 of swimming lessons is open now: https://fremontrecreation.activityreq.com/selectactivity_t2.wcs

Keene Memorial Library: The library is open to **adults only** from 9:30 am - 5:30 pm, Monday, Thursday and Friday and Tuesday and Wednesday from 9:30 am – 7:30 pm. Children will not be allowed in the library until July 6th.

Christensen Field: Gatherings at Christensen Field are limited to 50% of rated capacity (not to exceed 10,000) as long as groups are less than 8 individuals and the 6-foot social distancing is maintained.

COVID-19 statistics. Please note that each underlined title is a hyperlink to that organization's website. Dodge County dropped to seventh from fourth in the state with amount of positive cases this week. Three Rivers Public Health Department's COVID-19 Dashboard contains additional statistics:

<https://www.threeriverspublichealth.org/Coronavirus-Updates>

Nebraska	<u>Department of Health and Human Services Dashboard</u> 18,346 positive cases — 146,849 negative tests — 260 deaths
Dodge County	672 positive cases — 3,316 negative tests (seventh in state with positive cases)
United States	The Centers for Disease Control and Prevention (CDC) <u>website</u> : 2,374,282 cases — 121,809 deaths https://www.cdc.gov/covid19
Globally	<u>World Health Organization Situation Report</u> 9,473,214 cases — 484,249 deaths
	<u>Johns Hopkins University of Medicine COVID-19 Dashboard</u> 9,635,935 cases — 489,922 deaths (U.S. ranks first, followed by Brazil in cases)

Firework Sales Start Saturday, June 27

The sale of fireworks begins tomorrow, June 27 and extends through July 4. A reminder that fireworks may be discharged June 27 through July 3 between the hours of 8:00 a.m. and 11:00 p.m. On July 4, fireworks may be discharged between the hours of 8:00 a.m. and midnight.

Keep Fremont Beautiful reminds us that leaving spent fireworks on the ground is littering and littering is against the law. If you blow it up, please pick it up.

Please be safe and responsible as we celebrate the birth of our Nation.



Fireworks Safety Tips

- ★ Never allow **children** to play with or ignite fireworks.
- ★ **Never** try to **re-light** or **pick up** fireworks that have not ignited fully.
- ★ Keep a **bucket of water** or a **garden hose** handy in case of fire or other mishap.
- ★ Make sure fireworks are **legal** in your area before buying or using them.
- ★ Light fireworks **one at a time**, then **move back** quickly.

Source: U.S. Consumer Product Safety Commission 2017 Fireworks Annual Report



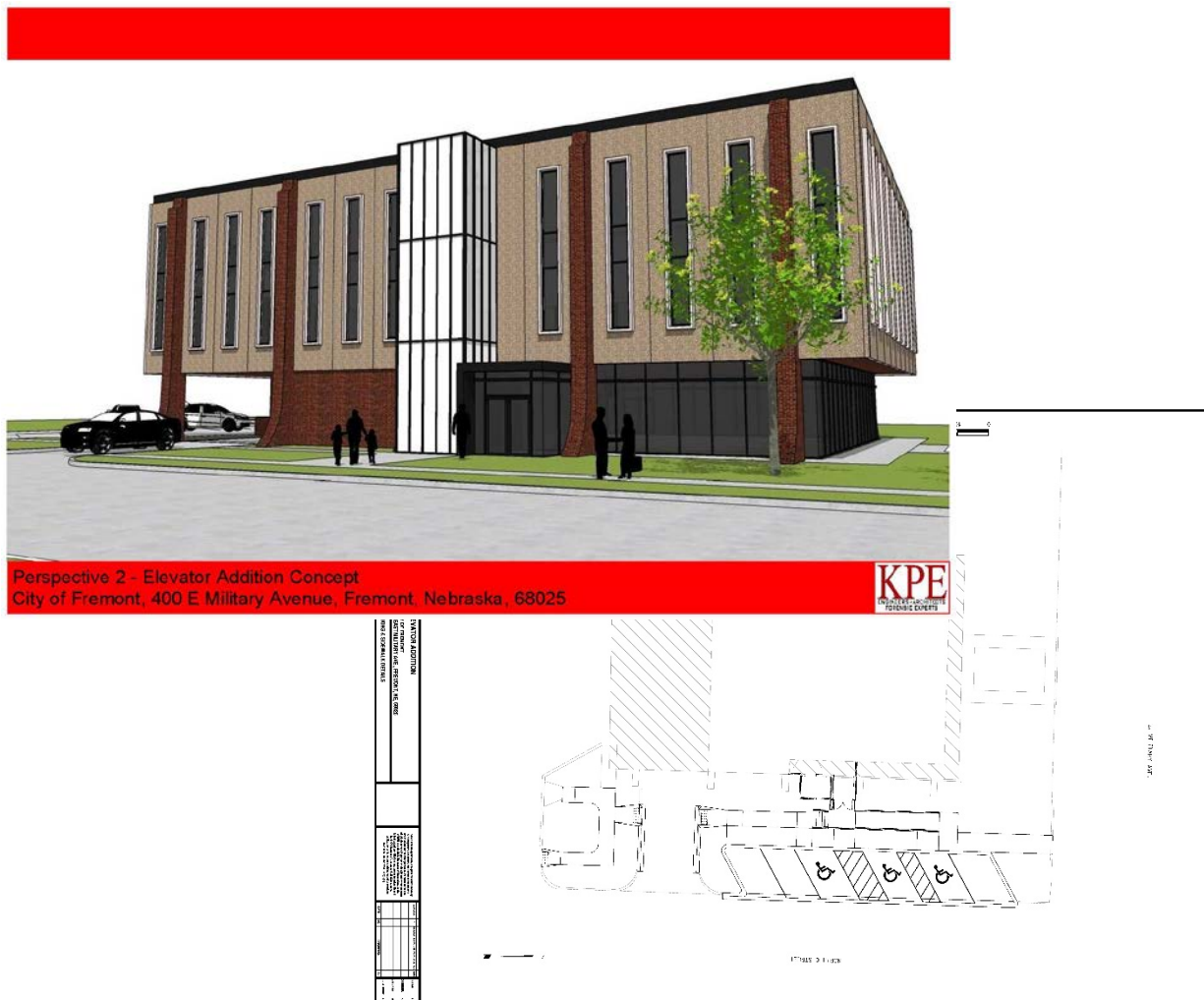
There is no job so important and no service so urgent that we cannot take the time to do the work safely!

Elevator Project to Begin

As a recipient of federal funds, the City is required to identify American's with Disabilities Act (ADA) deficiencies and have a transition plan to bring the deficiencies into compliance for all City owned facilities. The Municipal Building was identified as having multiple ADA deficiencies including lack of ADA compliant parking and lack of an ADA compliant elevator. Once the deficiencies were identified, funding was sought to correct them. The elevator project is funded largely by a Community Development Block Grant. The project will provide ADA compliant parking, improved access to the building, and an ADA compliant elevator.

The project will ramp up starting Monday, June 29, 2020. The building will remain open but with a couple of traffic pattern changes. The middle parking lot will be closed and become the construction and lay-down area for Dicon, the contractor. The West entrance will be closed and access to the building will be from the East entrance only. The existing elevator will remain in service for the majority of the project. The drive-thru will remain open for the duration of the project.

The conceptual drawing below, with the red border, shows the elevator design and placement. The ADA parking is shown in the second drawing.



There is no job so important and no service so urgent that we cannot take the time to do the work safely!