

City of Fremont Update

Date: May 29, 2020

To: City Employees/ City Boards/ Mayor & City Council

City to Reopen Ronin Pool, Playgrounds, and Library in Phases

Following the State's new Health Directive, the City will slowly begin to reopen many of the City's facilities in phases starting on June 1. After getting the okay from the Board of Health, here is an overall picture on the efforts to reopen City parks, Ronin Pool, Keene Memorial Library, and Christensen Field.

- Splash pads were opened this past weekend, Memorial Day Weekend.
- Park playgrounds, park shelters, and restrooms will open June 1. Equipment will not be sanitized and signs will be posted to let people know that use is at each person's risk.
- Christensen Field will begin booking events on June 1.
- Ballfields will open for practice on June 1 and will open for youth and adult games on June 18. Teams wishing to use ballfields should contact the Parks & Rec Department to get the details including participation forms and insurance requirements.
- Ronin Pool will start with a phased reopening on June 15. The City will release more details before June 15.
- Splash Station will remain closed for the summer.
- Keene Memorial Library will also be phasing in its reopening starting on June 1. Patrons should check the website (https://keen.ent.sirsi.net/client/en_US/default) or call the Library at 402-727-2694 to get all the details.

COVID-19 statistics. Please note that each underlined title is a hyperlink to that organization's website.

Nebraska [Department of Health and Human Services Dashboard](#)
13,2615 positive cases — 81,542 negative tests — 164 deaths

Dodge County **413 positive cases — 1,830 negative tests**

United States The **Centers for Disease Control and Prevention (CDC)** [website](#):
1,698,523 cases — 100,446 deaths <https://www.cdc.gov/covid19>.

Globally [World Health Organization Situation Report](#)
5,593,631 cases — 353,334 deaths

[Johns Hopkins University of Medicine COVID-19 Dashboard](#)
5,850,258 cases — 361,249 deaths

New Scale House at Transfer Station

After a failed attempt at mitigating the damage caused by flood waters in March of 2019, we have operated the scale at the transfer station out of a temporary building. Although the temporary building wasn't setup like we needed it to be, Candy



and Shelby have done a wonderful job of making it work.

The new scale house, shown in the picture on the previous page, looks very similar to the temporary building, but it has some major improvements. First, the window is much larger, which will really help the ladies to be able to better interact with our customers. Second, the new building has a restroom, something neither the old building nor the temporary buildings had. Having an indoor restroom will be a great improvement over the port-a-pot that sits outside the scale house now. Third, and very important in a flood, the new scale house is portable so it can be moved should we need to get it out of harm's way.

The scale house cost \$23,000, plus there will be cost of getting water and sewer to the restroom. The old building will be removed when utilities and internet service are removed and transferred to the new scale house.

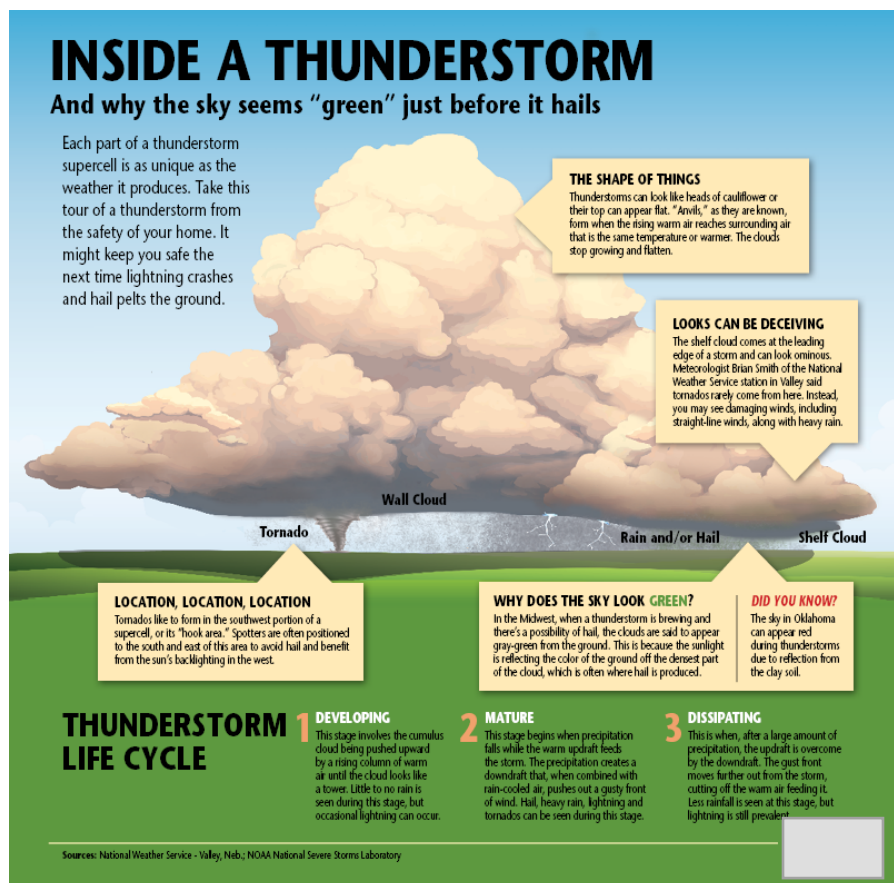
What is the Difference Between a Watch and a Warning

If you are like me, I don't understand the difference between a severe weather watch and severe weather warning. I just know that it is very likely to storm, so I should keep an eye on the weather. Here is some information explaining the difference between a watch and warning and a graphic from the National Weather Service describing what is inside of the typical thunderstorm.

- **Watch:** Be prepared because severe weather is possible. Check for forecast updates, monitor sky conditions and know where to take shelter, if needed.

- **Warning:** Take action because severe weather is imminent. Take shelter immediately, seek further information and check for forecast updates from local media and the weather service.

As the jet stream moves farther to the north, the jet stream drags warm moist air from the Gulf of Mexico into the Midwest. As the warm air is pushed up into the atmosphere by colder air at the ground, thunderstorms are formed. Thunderstorms are quite common throughout in the Midwest from April through July or August, so please keep an eye on the sky and please pay particular notice to the weather to stay safe.



There is no job so important and no service so urgent that we cannot take the time to do the work safely!