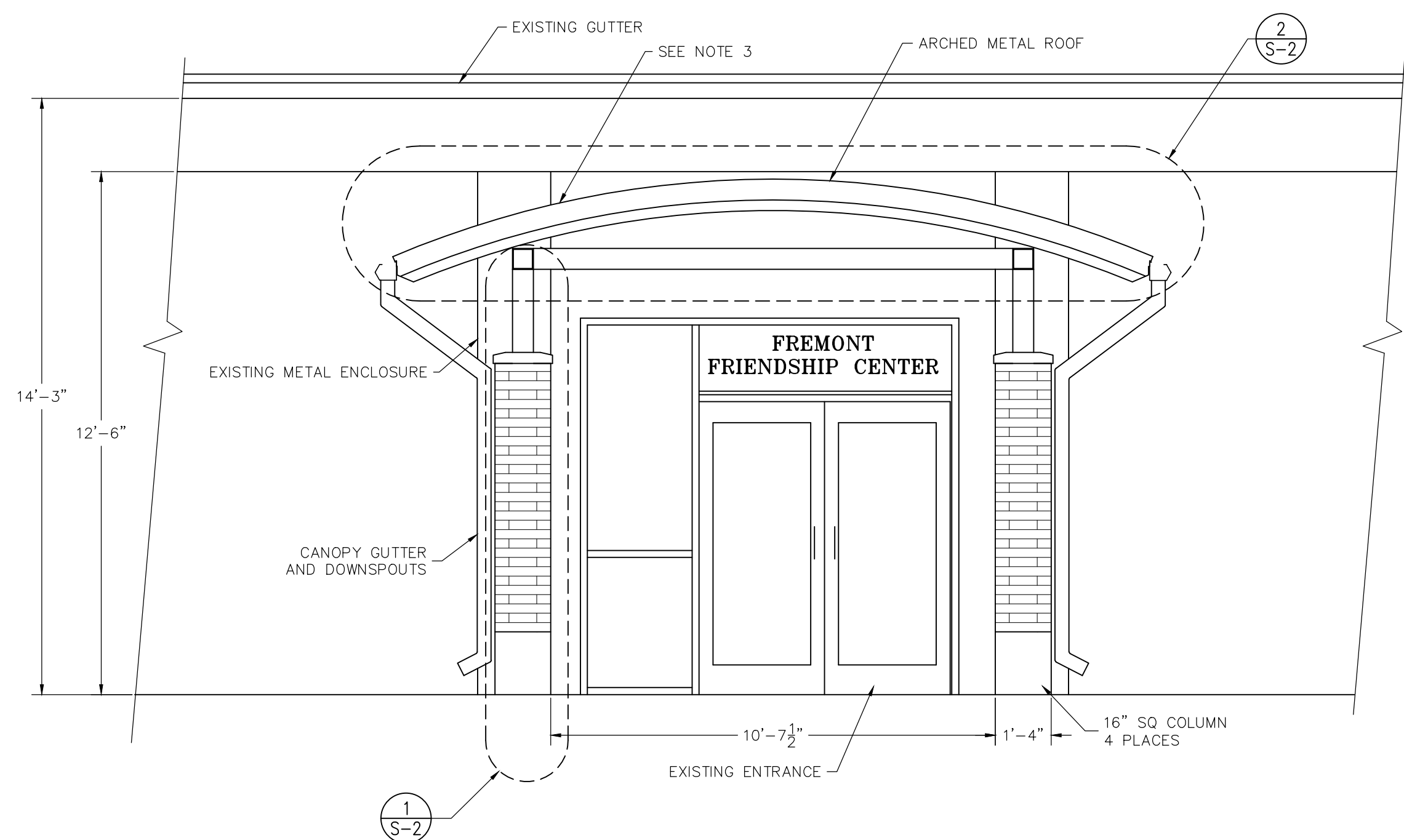
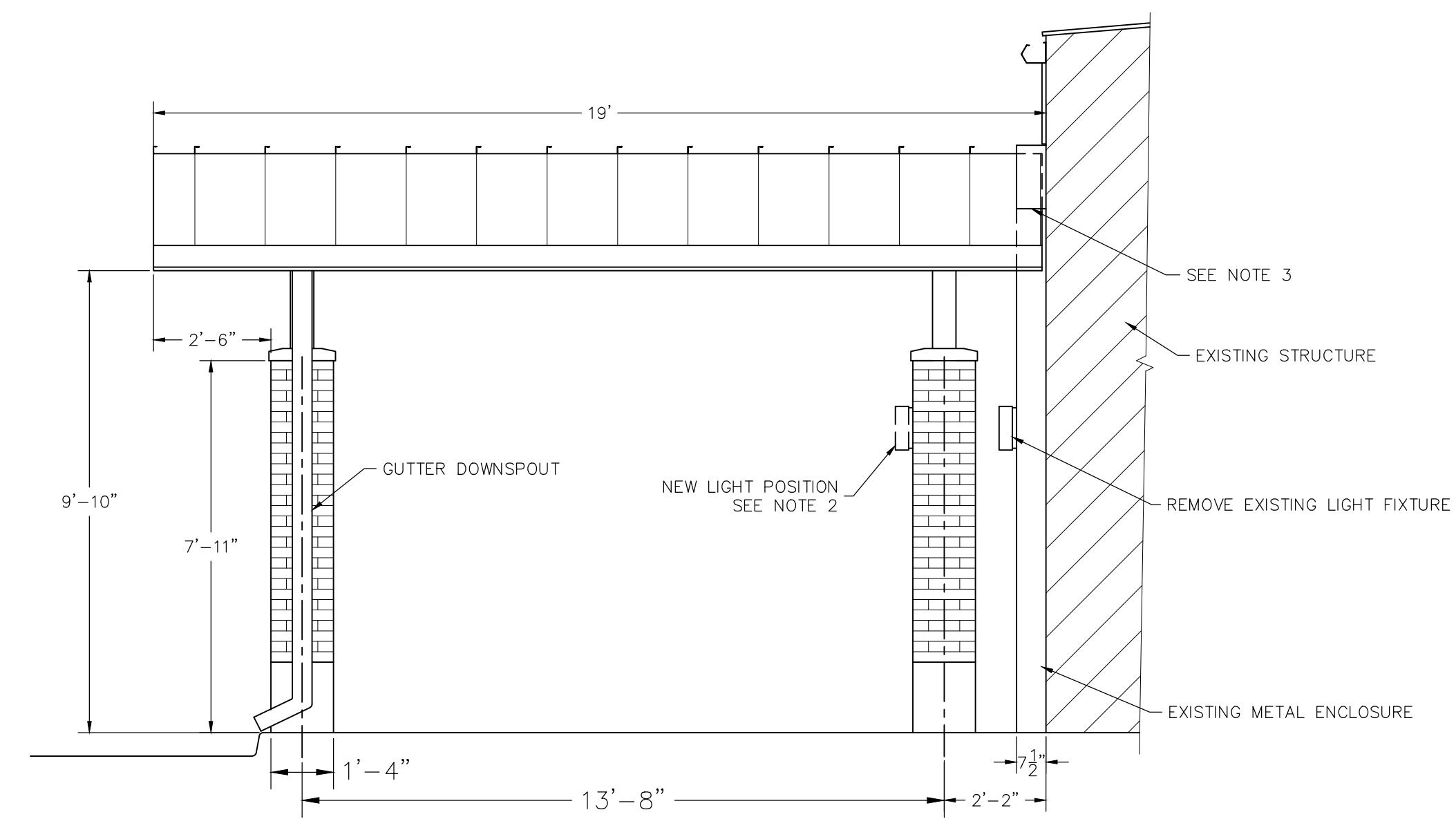


CANOPY PLAN VIEW



SOUTH ELEVATION VIEW PARTIAL



CANOPY EAST ELEVATION

NOTES:  
 STRUCTURAL NOTES:  
 BUILDING CODE: 2012 IBC  
 ROOF LIVE LOAD 20 PSF  
 COLLATERAL LOAD 5 PSF

SNOW LOAD:  
 GROUND SNOW LOAD, P<sub>g</sub> 25 PSF  
 MIN UNIFORM ROOF SNOW LOAD 25 PSF  
 DRIFT SURCHARGE LOAD SLIDING AND DRIFTED SNOW LOAD PER ASCE 7-10  
 THERMAL FACTOR, C<sub>t</sub> 1.0

WIND LOAD:  
 MAIN WIND FORCE RESISTING SYSTEM  
 WIND SPEED 115 MPH  
 IMPORTANCE FACTOR 1.0  
 BUILDING ENCLOSURE OPEN  
 EXPOSURE CATEGORY C

- GUTTER AND FLASHING COLOR TO MATCH EXISTING METAL WORK. STRUCTURAL STEEL MEMBER COLOR TO MATCH MAIN CHRISTENSEN FIELD ENTRANCE CANOPY COLOR.
- REMOVE EXISTING LIGHT FIXTURE ON METAL ENCLOSURE AND COVER OPENINGS WITH MATCHING COLOR PLATES. PROVIDE WIRING TO NEW COLUMN LOCATION AND RELOCATE FIXTURE OR PROVIDE AND INSTALL NEW FIXTURE TO MATCH ORIGINAL FIXTURE. ELECTRICAL WORK TO BE PERFORMED BY QUALIFIED ELECTRICAL CONTRACTOR.
- NOTCH ROOF PANELS AND DECK AROUND EXISTING METAL ENCLOSURE AND PROVIDE FLASHING. PROVIDE ROOF CRICKET/FLASHING ON UPPER SIDE TO PREVENT WATER POOLING.

STRUCTURAL STEEL MATERIAL:  
 STEEL BEAMS: ASTM A992, GRADE 50  
 ANGLES, CHANNELS, PLATES AND BARS ASTM A36  
 STEEL TUBES ASTM A500 GRADE B



1929 NORTH BROAD STREET  
FREMONT, NE 68025

FRIENDSHIP CENTER  
CANOPY

DWG NO. 1915

GLUND CONSULTING LLC  
glund5251@msn.com

DRAWN BY: 11-01-19 GAL  
 APPROVED: 11-02-19 GAL

SCALE: 3/8" = 1'

SHEET: S-1