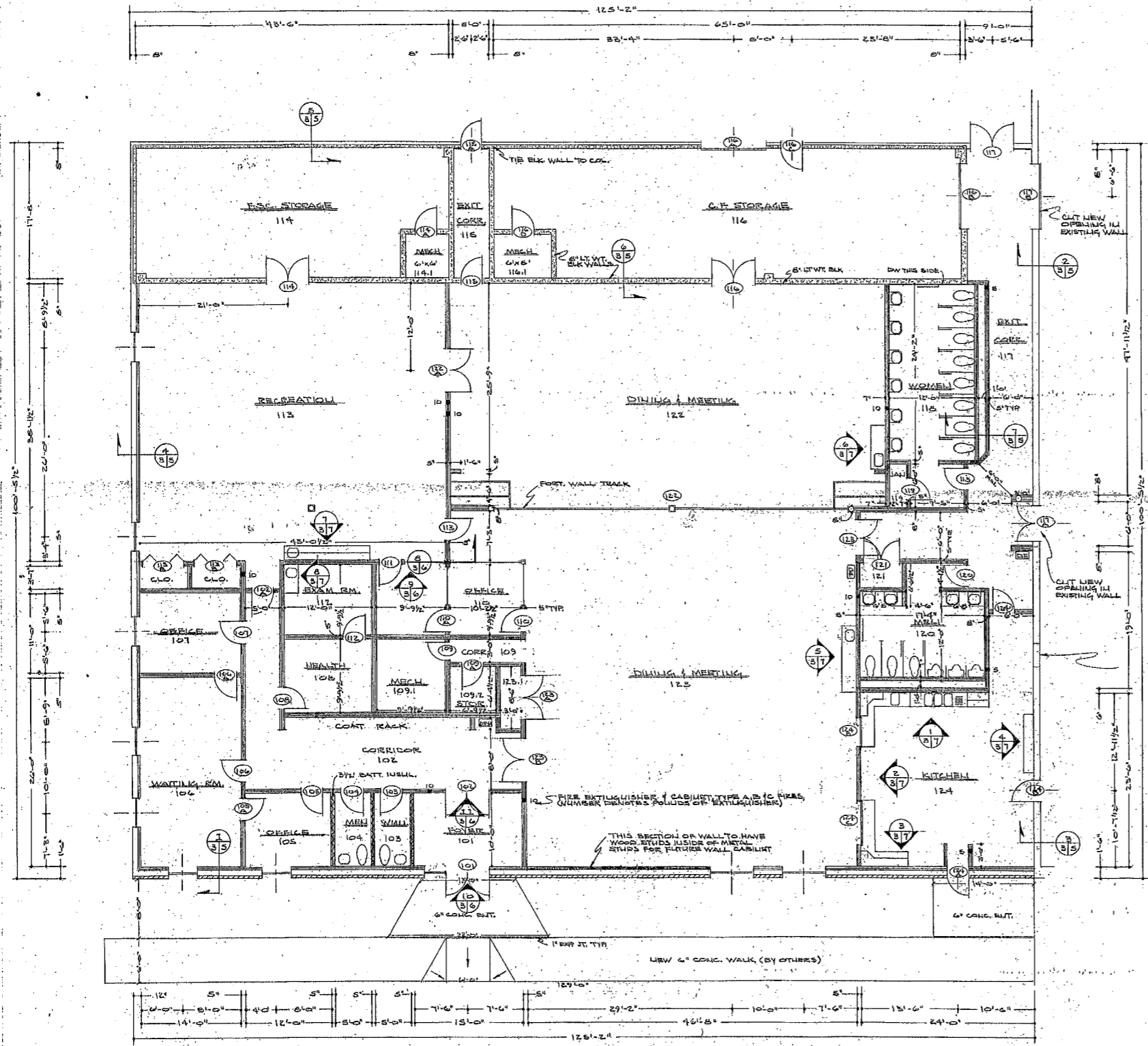


# EXISTING



REMOVE EXISTING DOOR & FRAME INCLUDING HINGES & SALVAGE FOR C.T.I. CLOSE SPRING WITH MATERIALS TO MATCH ADJACENT WALL.

NOTES  
REFER TO SHEET E-5 FOR LOCATIONS OF SMOKE CURTAINS & SHEET A-5 FOR DETAIL OF CONSTRUCTION.

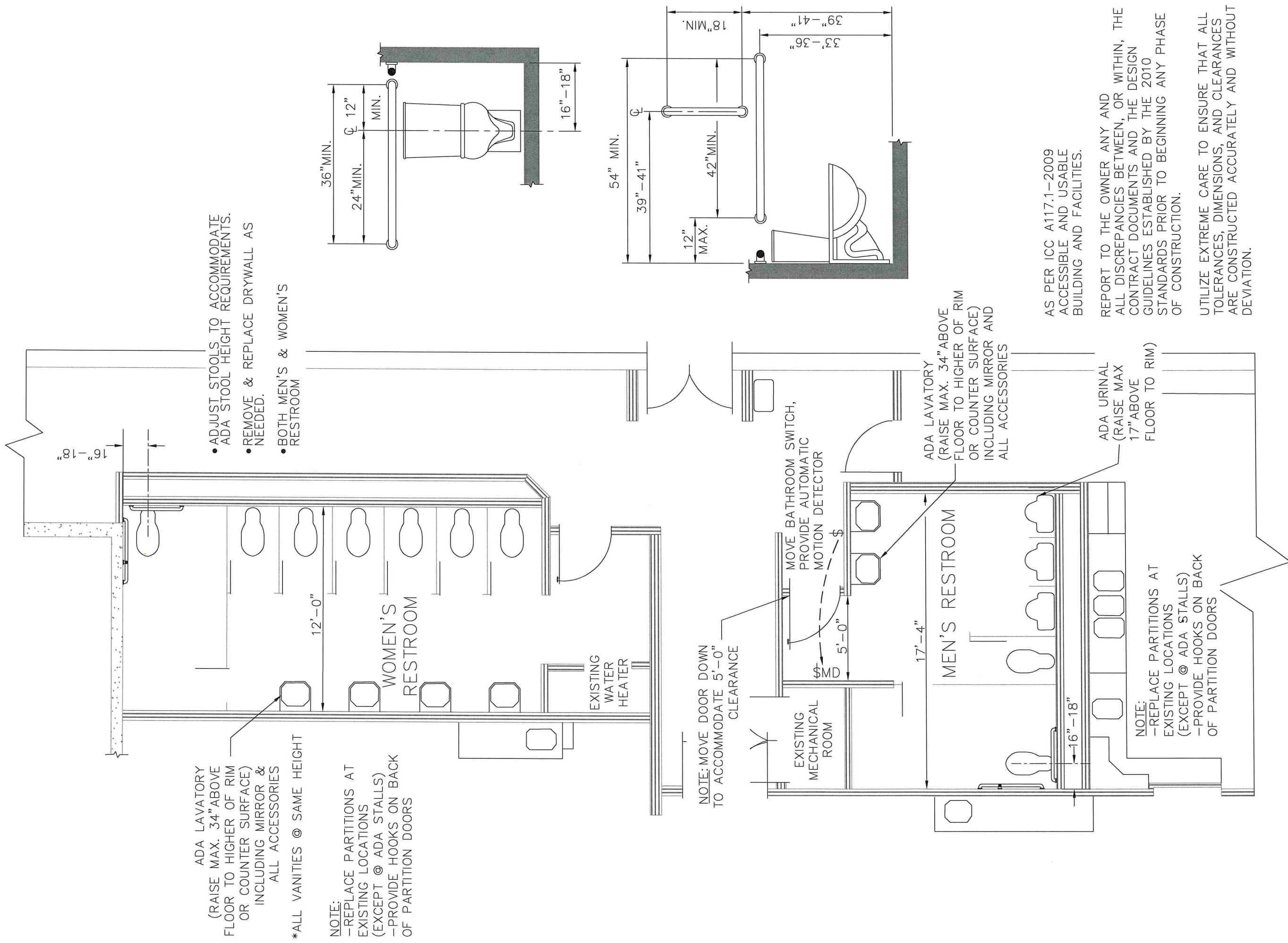
FLOOR PLAN  
SCALE: 1/8" = 1'-0"

Fremont Senior Center B-89-2  
B-89-2 Fremont Senior Center

B-89-2 SHEET 3

TOLERANCES UNLESS AS NOTED		REVISIONS			CITY OF FREMONT ENGINEERING DEPARTMENT		
		NO.	DATE	BY			
DECIMAL	1/16"	1			DRAWN BY Dols	SCALE SHOWLL	MATERIAL
FRACTIONAL	1/32"	2					
	1/64"	3					
	1/128"	4					
ANGULAR	1/4°	5					
	1/2°	6					
					CHK'D	DATE 4-89	DRAWING NUMBER
					TRACED	APP'D	A-3

# PROPOSED



- ADJUST STOOLS TO ACCOMMODATE ADA STOOL HEIGHT REQUIREMENTS.
- REMOVE & REPLACE DRYWALL AS NEEDED.
- BOTH MEN'S & WOMEN'S RESTROOM

ADA LAVATORY (RAISE MAX. 34" ABOVE FLOOR TO HIGHER OF RIM OR COUNTER SURFACE) INCLUDING MIRROR & ALL ACCESSORIES

\*ALL VANITIES @ SAME HEIGHT

NOTE:  
 -REPLACE PARTITIONS AT EXISTING LOCATIONS (EXCEPT @ ADA STALLS)  
 -PROVIDE HOOKS ON BACK OF PARTITION DOORS

NOTE: MOVE DOOR DOWN TO ACCOMMODATE 5'-0" CLEARANCE

EXISTING MECHANICAL ROOM

MOVE BATHROOM SWITCH, PROVIDE AUTOMATIC MOTION DETECTOR

ADA LAVATORY (RAISE MAX. 34" ABOVE FLOOR TO HIGHER OF RIM OR COUNTER SURFACE) INCLUDING MIRROR AND ALL ACCESSORIES

MEN'S RESTROOM

ADA URINAL (RAISE MAX 17" ABOVE FLOOR TO RIM)

NOTE:  
 -REPLACE PARTITIONS AT EXISTING LOCATIONS (EXCEPT @ ADA STALLS)  
 -PROVIDE HOOKS ON BACK OF PARTITION DOORS

AS PER ICC A117.1-2009 ACCESSIBLE AND USABLE BUILDING AND FACILITIES.

REPORT TO THE OWNER ANY AND ALL DISCREPANCIES BETWEEN, OR WITHIN, THE CONTRACT DOCUMENTS AND THE DESIGN GUIDELINES ESTABLISHED BY THE 2010 STANDARDS PRIOR TO BEGINNING ANY PHASE OF CONSTRUCTION.

UTILIZE EXTREME CARE TO ENSURE THAT ALL TOLERANCES, DIMENSIONS, AND CLEARANCES ARE CONSTRUCTED ACCURATELY AND WITHOUT DEVIATION.